

# Stormwater Fee Dialogue

## One Water LA 2040

January 31, 2017

Shahram Kharaghani, Ph.D, PE, BCEE  
Stormwater Manager  
LA Sanitation, City of Los Angeles



# Presentation Overview

- ▶ **Watershed Protection Program**
- ▶ **Revenues**
- ▶ **Fees**
- ▶ **Future Needs**
- ▶ **Funding Options**
- ▶ **Discussion**



# Watershed Protection Program Setting



# Watershed Protection Program Revenues

Funding source	Amount (annual)
<b>SPAF</b>	\$28 million
<b>General fund</b>	\$13 million
<b>Grants</b>	\$2 million
<b>Developer Plan Review Fees</b>	\$1.2 million
<b>Total</b>	\$44.2 million

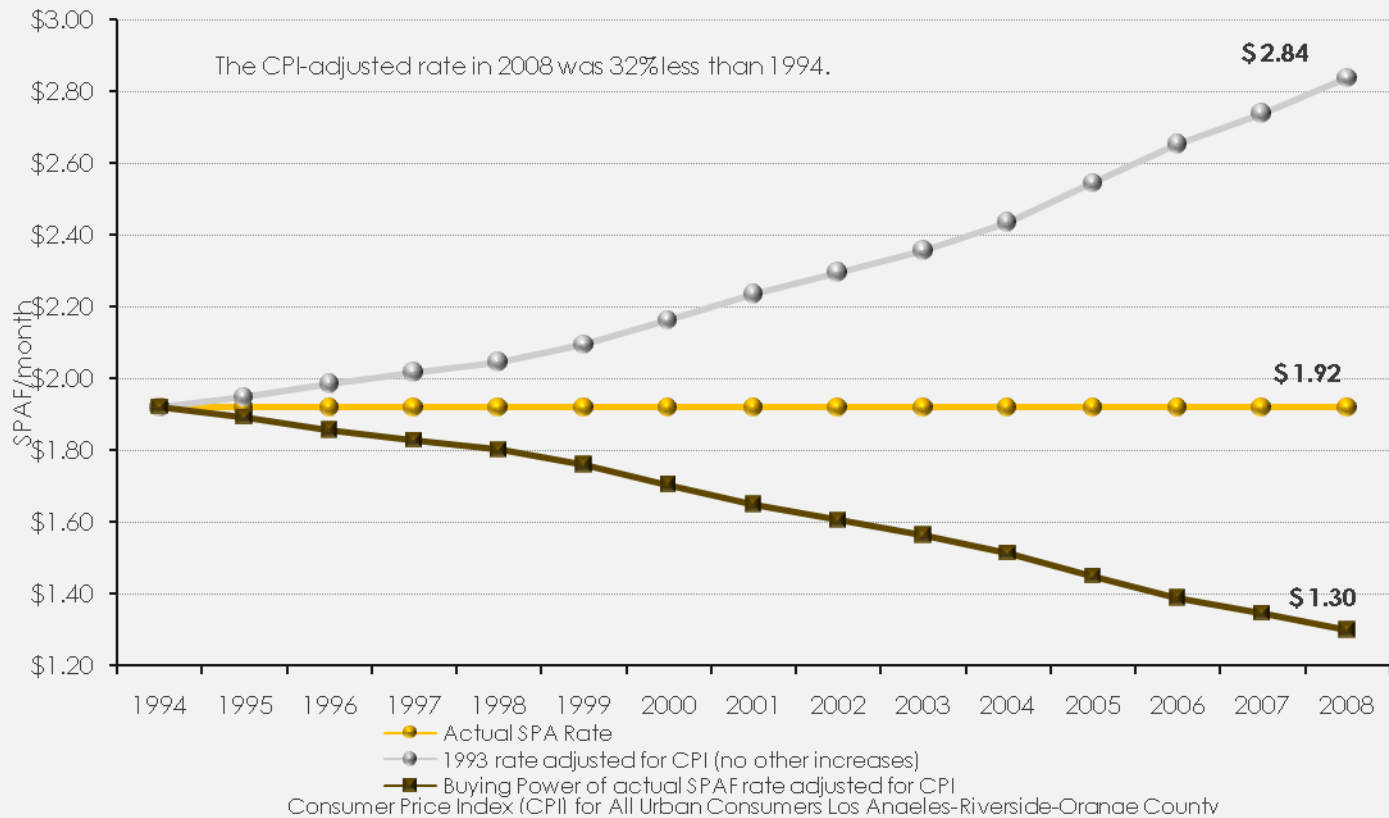
## Capital projects :

- Prop O, \$500 million, 2004
- LADWP partnership, \$15 million, 2015

❖ *These funding sources do not cover O&M*

# SPAC Over Time

## Fund buying power



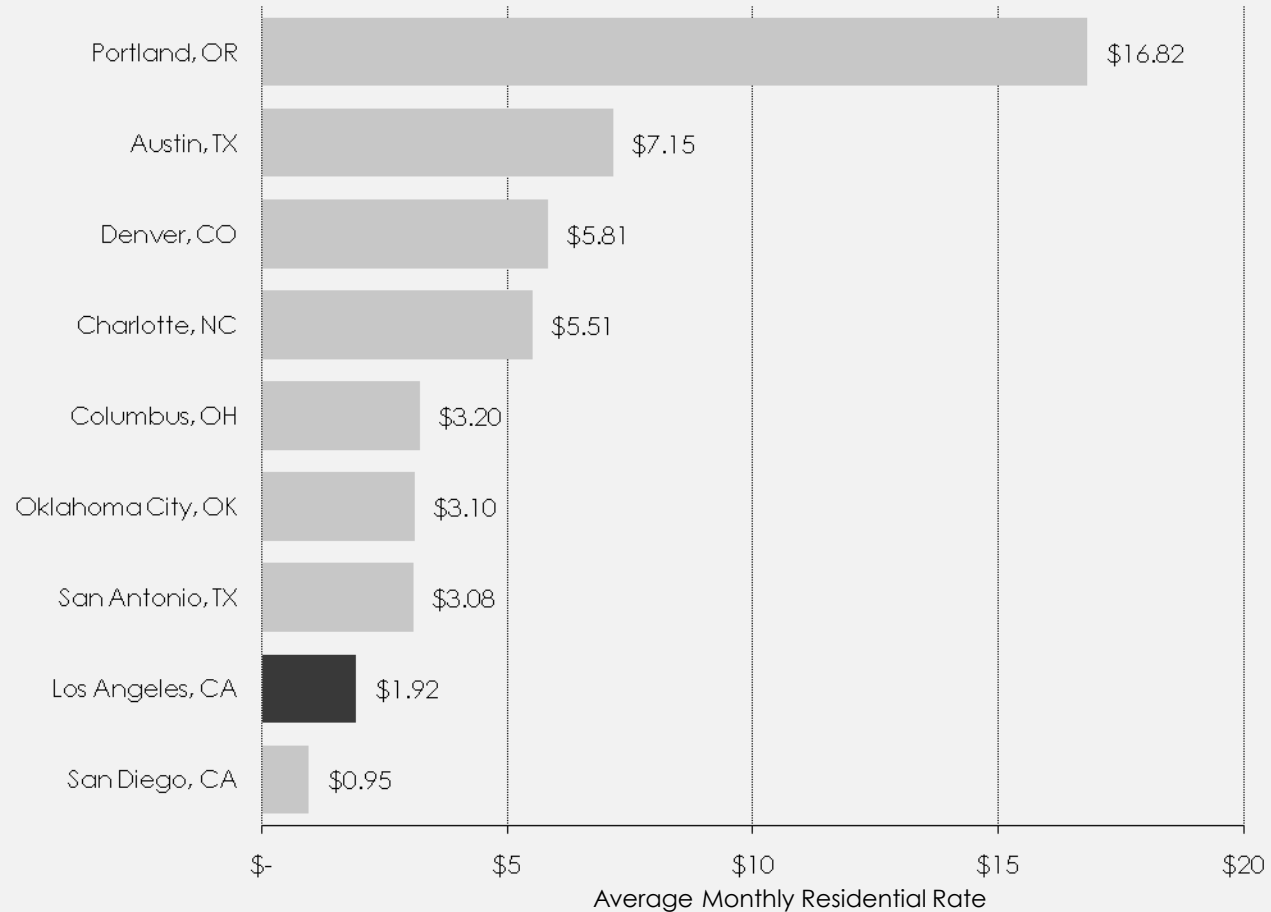
# Current Fees & Rates

- ▶ SPAC, average residential property: \$23/year
- ▶ Low Impact Development Plan Check:
  - Residential: \$206
  - All other: \$800 - \$1,000
- ▶ County Flood Control District:
  
- ▶ Inspection fee commercial & industrial facilities (future):  
approx. \$130/annually



# SPAC Comparison

Storm Water Rate Comparisons (Pop. > 500,000)



# Culver City – Measure CW

## Clean Water, Clean Beach Parcel Tax:

- ▶ Voters on November 8, 2016: yes 73.8%, no 26.2%
- ▶ \$99 annually for single family residential parcel
- ▶ \$69 annually for multi-family residential dwelling unit
- ▶ \$1,096 annually per acre of land for non-residential
- ▶ Annual revenue about \$2 million
- ▶ Funds to be used for reducing and preventing water pollution and managing storm water and urban runoff.
- ▶ Examples:
  - Green Street Master Plan
  - Regular cleaning of City storm drain pipes and street inlets
  - Monitoring water quality and waterway compliance
  - Providing education and outreach activities to the public





# Santa Monica – Measure V

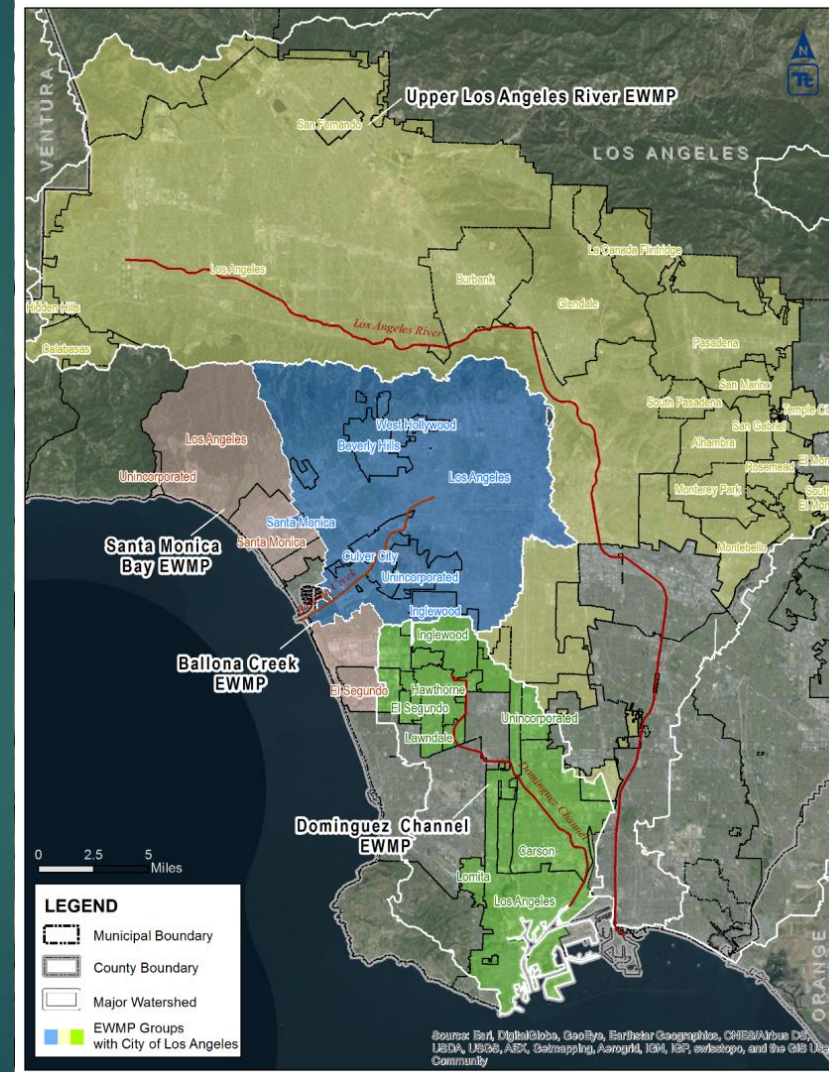
## Clean Beaches and Ocean Parcel Tax:

- ▶ Approved by over two thirds of voters in 2006
- ▶ \$84 annually for single family residential parcel (2007-2008, but annual adjustment to CPI)
- ▶ Variable rates for other parcels (size, runoff factor)
- ▶ Annual revenue about \$4.1 million (2016-17)
- ▶ Funds to be used for storm drain and storm drainage related purposes



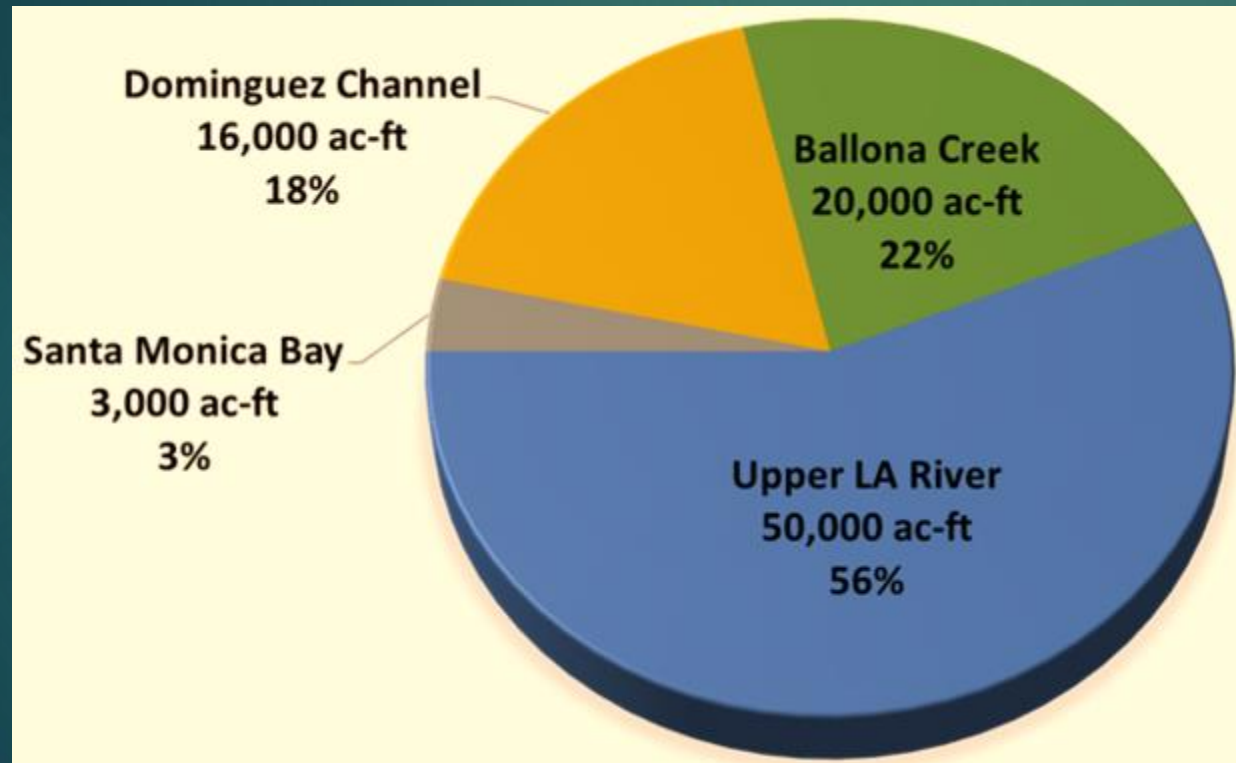
# Enhanced Watershed Management Programs

- ▶ Five EWMPs: Upper LA River, Ballona Creek, Marina del Rey, Santa Monica Bay
- ▶ Developed with ~30 co-permittees, environmental organizations, City departments, stakeholders
- ▶ Compliance pathway for MS4 Permit and 22 TMDLs
- ▶ Companion document: Coordinated Integrated Monitoring Programs



# Enhanced Watershed Management Programs

## EWMP Project Implementation Water Production



# Enhance Watershed Management Programs

## Economic Stimulus

- ▶ For every \$1 Million in investments, there is up to \$22 Million in added benefits or avoided costs.



# Enhanced Watershed Management Programs

## Economic Stimulus

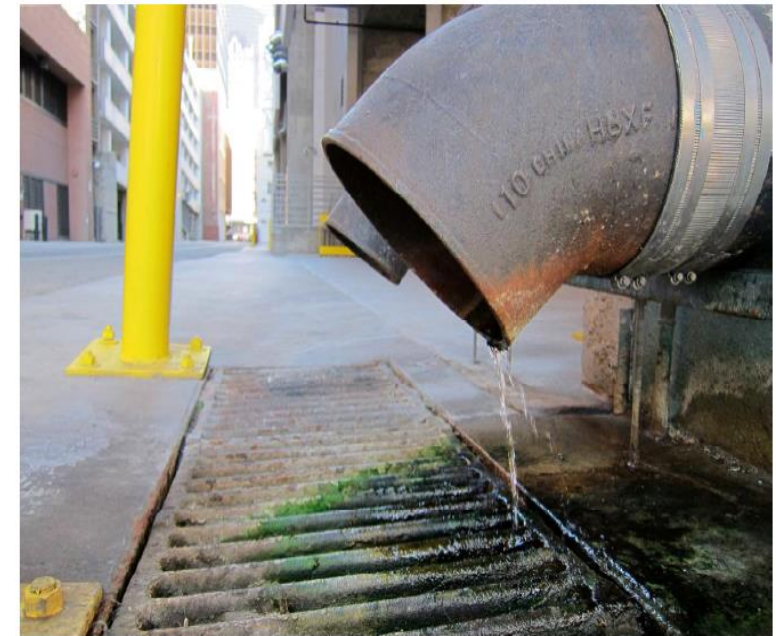
\$1 million invested in green stormwater projects

=

\$2 million in local economy sales and creates up to 16 jobs.



## Water Use Efficiency and Jobs



Economic Roundtable  
A Nonprofit Research Organization



# EWMP Costs for Los Angeles

Watershed	Compliance Date	Capital Cost of BMPs (\$ millions)
Marina del Rey	2021	\$250
Santa Monica Bay	2021	\$410
Dominguez Channel	2032	\$530
Ballona Creek	2021	\$2,280
Upper LA River	2037	\$3,820
<b>Total</b>	2021-2037	\$7,300

Capital cost, no escalation, no O&M, 2015 dollars

# Capital Improvement Program (CIP)

- ▶ Stormwater CIP: short-term (5 yrs) but more detailed than EWMPs
- ▶ Identified \$1.5B in specific projects for early EWMP milestones
  - ▶ Signature regional projects
  - ▶ Distributed green streets
  - ▶ Rainwater capture & water supply
  - ▶ Flood control needs

---

## City of Los Angeles Stormwater and Green Infrastructure 5-Year Capital Improvement Plan

---



CITY OF LOS ANGELES, BUREAU OF SANITATION  
WATERSHED PROTECTION DIVISION

JUNE 30, 2015

# Future Funding Options

- ▶ Regional approaches
  - Countywide Clean Water fee; ~\$83M annually for City, but fee failed in 2013
  - AB 2403: defines stormwater as a source of water, 2014
  - Clean Drought Resiliency Work Plan; currently being developed by County
  - Joint Powers Authorities: to develop new regional funding sources, but subject to Prop 218



# Future Funding Options

- ▶ City specific approaches
  - Increase of SPAC, or new parcel tax
  - Inspection fee commercial/industrial facilities: ~\$10M per year
  - SPAC to government parcels: \$3.3M - \$8M per year
  - Monetization of rainwater
  - Car rental fee: \$2/car for outside visitors
  - Stormwater credit trading
  - Public-Private Partnerships (P3)
  - State Revolving Fund: low interest, but still need fee
  - Grants: time consuming, highly competitive, small revenue stream

# Conclusion

Questions?

**Shahram Kharaghani, Ph.D, PE, BCEE**  
**Stormwater Manager**  
**LA Sanitation, City of Los Angeles**

