

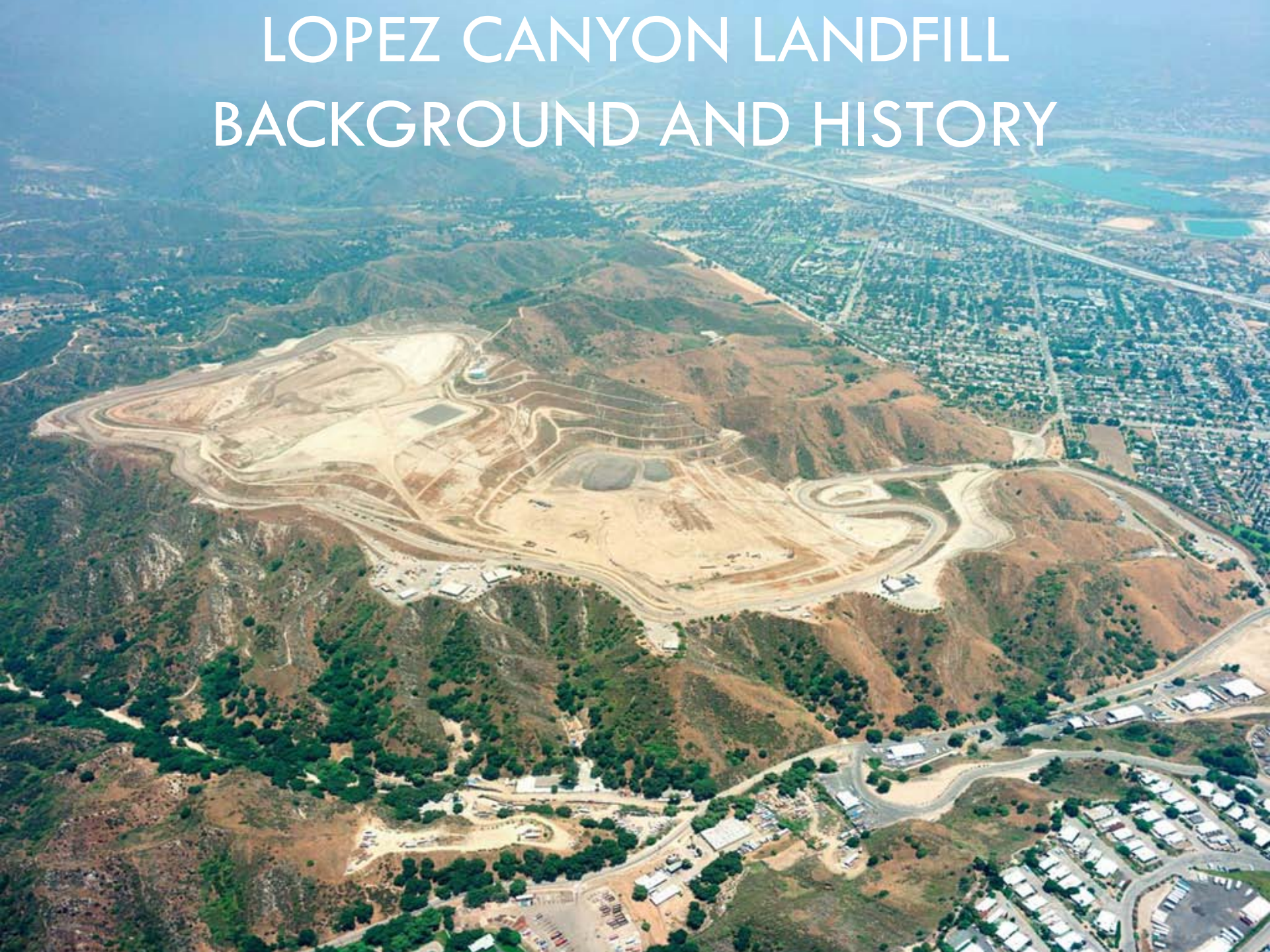
# CITY OF LOS ANGELES BUREAU OF SANITATION LANDFILL GAS UTILIZATION PROJECT



## LOPEZ CANYON LANDFILL

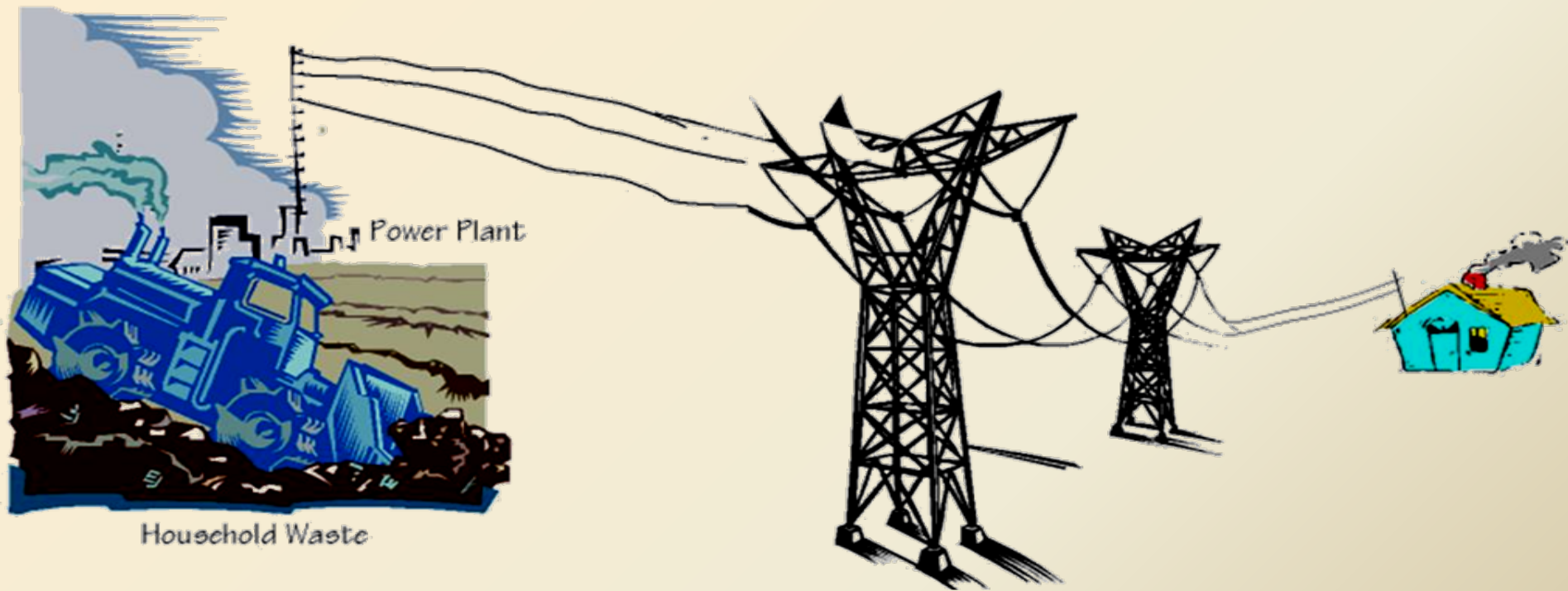


# LOPEZ CANYON LANDFILL BACKGROUND AND HISTORY





# OUR JOURNEY IN TURNING LANDFILL GAS INTO ENERGY



# LOPEZ CANYON 6 MW GAS TO ENERGY FACILITY





# 1.5 MW MICROTURBINE FACILITY

- State of the Art Technology
- 50 Microturbines (World Largest Installation)
- Enough Power for 1,500 Homes
- Pollution Reduction (10,000 lb NO<sub>x</sub>/year)
- Equivalent to Removing 500 Automobiles
- 90% Less Nox than Flaring
- Can be Relocated to Other Landfills



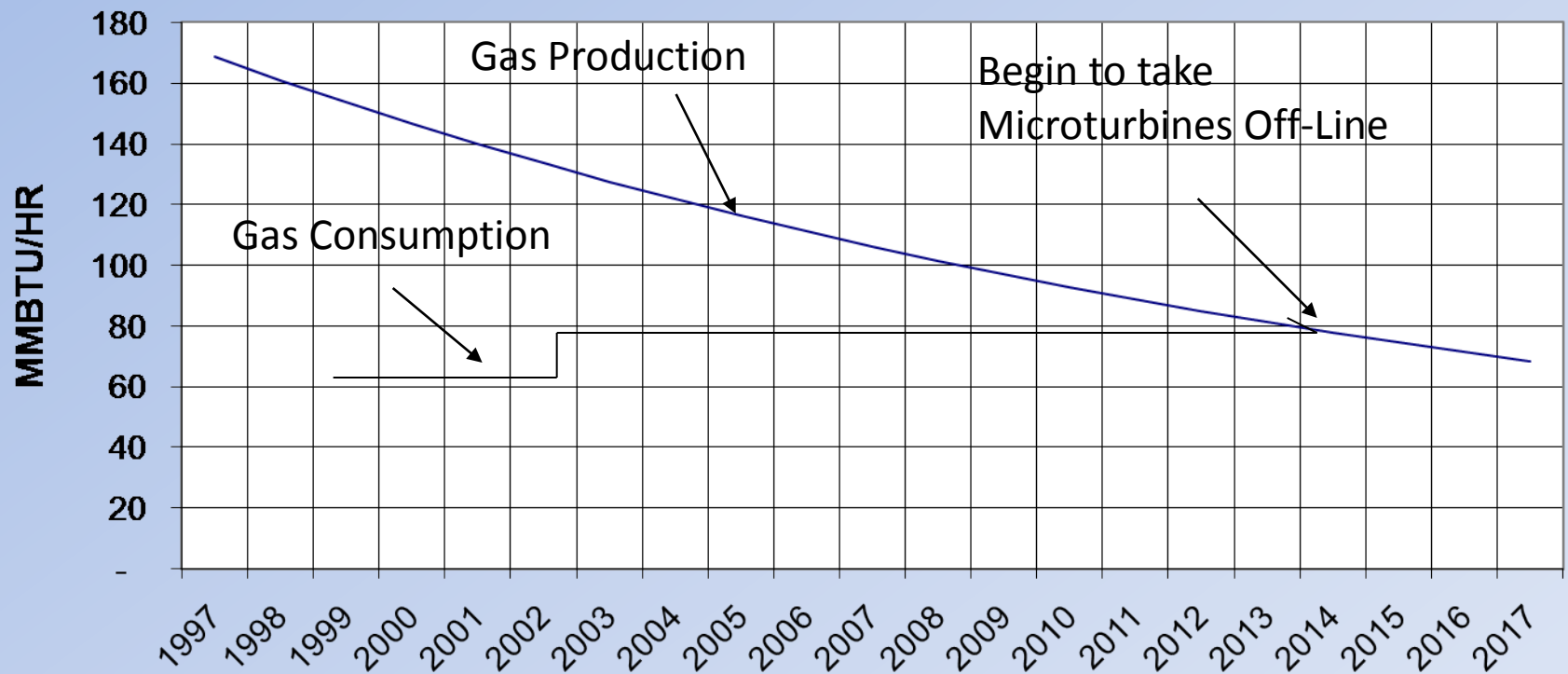
# Enclosed Flare Facility

- 7 Flares, 4 Operational and 3 Stand-by
- Total Capacity 8,750 CFM
- 99% Destruction of Air Contaminants



# Gas Consumption

Lopez MMBTU/HR

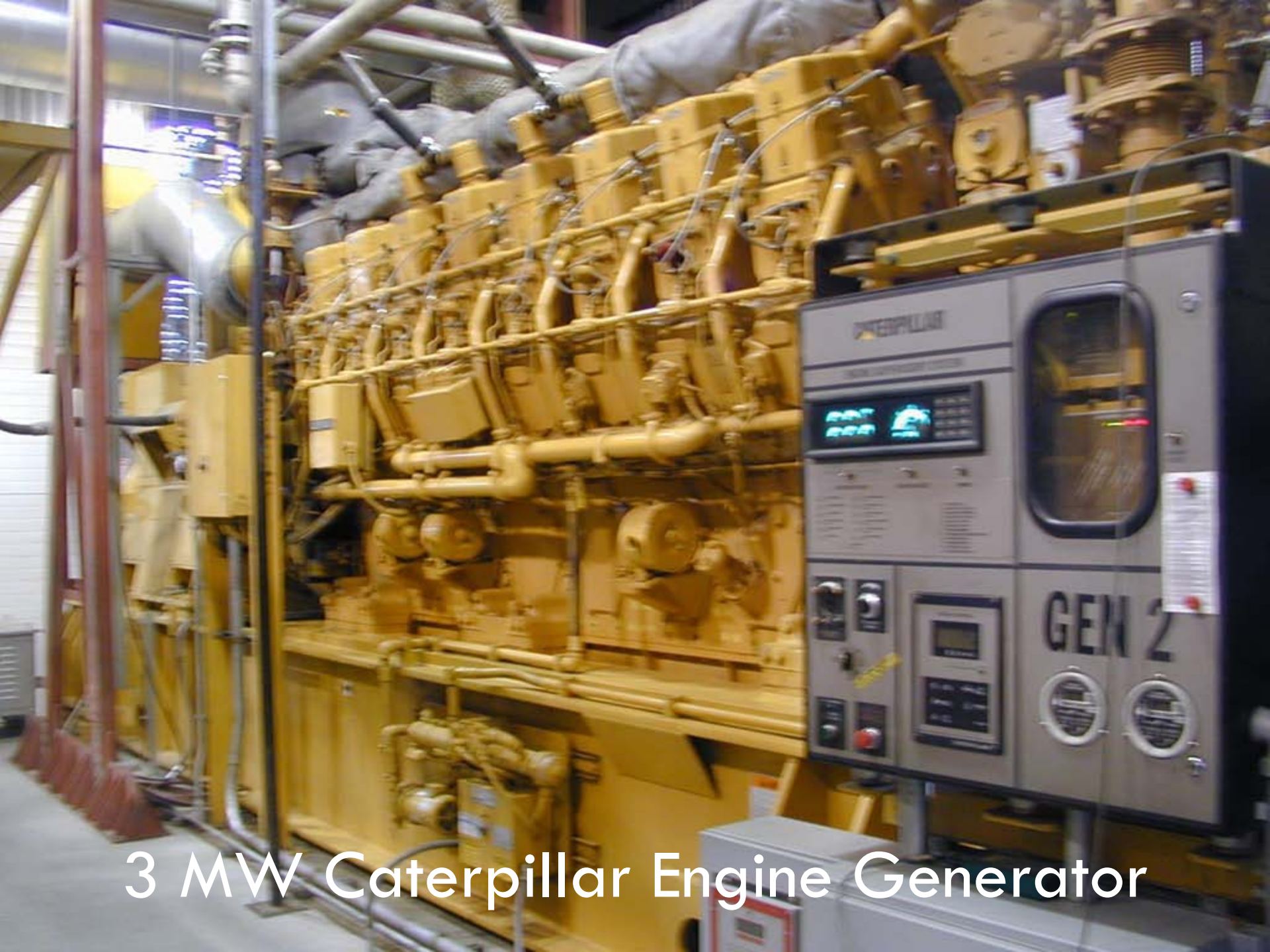




# Benefits

- Multiple Environmental Benefit
  - Air Toxic Emission Reduction
  - Acid Rain Reduction
  - Green House-gas Reduction
- Low Cost Long-term Renewable Energy Source
- Additional Revenue (Community, City and its Partners)
- Local Environmental Education
- Publicity (EPA Landfill Methane Outreach Program)





3 MW Caterpillar Engine Generator





6 MW Facility Switch Gear



# Micro-Turbine Project Site



# Capstone Micro-Turbine Unit



20 3:42 AM



# Acknowledgments

