



INVESTMENT THAT MATTERS

Investment in infrastructure and innovative planning ensures smarter land use practices, healthier watersheds, greater reliability of our water and wastewater systems, increased efficiency and operation of our utilities, enhanced livable communities, resilience against climate change, and protection of public health.

HOW CAN YOU HELP?

Your participation will be key to One Water LA's success.

- Get involved
- Request a presentation
- Share information with colleagues
- Become a stakeholder
- Visit www.onewaterla.org

NEXT STEPS

The One Water LA 2040 Plan is intended to be more than a plan – it's a comprehensive strategy for managing water in an integrated way to achieve the One Water LA Vision.

- PREPARE AN ENVIRONMENTAL IMPACT REPORT
- CONTINUE STAKEHOLDER ENGAGEMENT AND OUTREACH
- PURSUE FUNDING STRATEGIES INCLUDING GRANT AND LOAN PROGRAMS, REGIONAL PARTNERSHIPS, AND MORE.
- FURTHER INTERDEPARTMENTAL COLLABORATION AND COORDINATION
- COMPLETE FUTURE ONE WATER LA UPDATES AND REPORTING
- IMPLEMENT TRANSFORMATIONAL POLICIES AND PROGRAMS TO STREAMLINE COLLABORATION

The Plan will help guide integrated water, wastewater, and stormwater infrastructure projects, programs, and policies within the City.



ONE WATER LA 2040 PLAN

A COLLABORATIVE APPROACH TO INTEGRATED WATER MANAGEMENT

The One Water LA 2040 Plan takes a holistic and collaborative approach to consider all of the City's water resources from surface water, groundwater, potable water, wastewater, recycled water, dry weather runoff, and stormwater as "One Water." The Plan identifies multi-departmental and multi-agency integration opportunities to manage water in a more efficient, cost effective, and sustainable manner.

The One Water LA Team, led by LA Sanitation and the Los Angeles Department of Water and Power, dedicated countless hours to public and community outreach and engagement activities, inviting input and raising awareness about the programmatic purpose and needs.

TEAMWORK

500+
STAKEHOLDERS

30
MEMBER STEERING COMMITTEE

300+
ORGANIZATIONS REPRESENTED

10
STAKEHOLDER ADVISORY GROUP MEMBERS

30+
STAKEHOLDER & ADVISORY GROUP MEETINGS

5

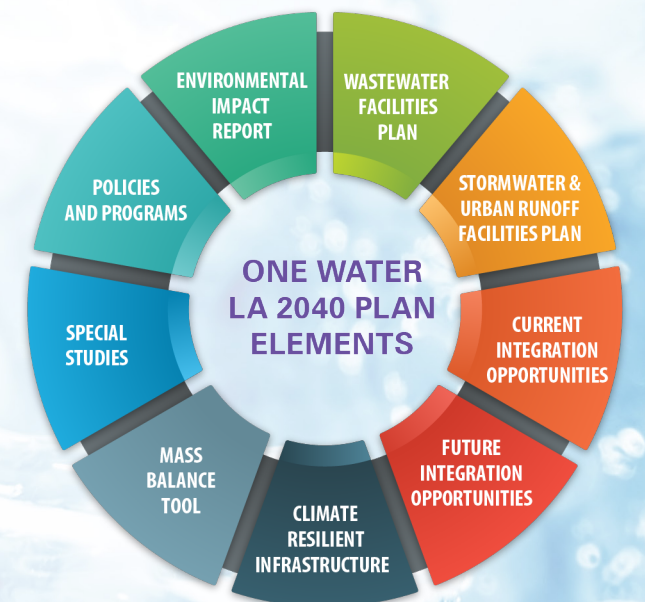
SPECIAL TOPIC GROUPS:

- Decentralized Treatment/Reuse
- Stormwater & Runoff Management
- Partnerships, Collaboration, and Innovation
- Funding & Cost-Benefit Analysis
- Outreach & Communication

65+

PRESENTATIONS & DISCUSSIONS

with neighborhood councils, conferences/events, and with education partners



Here in Los Angeles, we've responded to the ill effects of climate change and frequent droughts by making conservation a way of life. Whether in the midst of a dry spell or an El Niño season, we have no choice but to change the way we think about water, because we know that every drop counts. The One Water LA 2040 Plan devises permanent measures and resources that help the City and Angelenos more efficiently and effectively save our most precious resource.

-MAYOR ERIC GARCETTI

ONE WATER LA OBJECTIVES & PLAN OUTCOMES

Tangible, measurable accomplishments related to each of the One Water LA objectives have already been achieved by working together to implement integrated management practices.



1. INTEGRATE MANAGEMENT OF WATER RESOURCES AND POLICIES

- **Streamlined collaboration** through opportunities identified by a One Water LA Steering Committee.
- **A diverse One Water LA Stakeholder Group** representing LA's wide array of interest groups and people.
- **39 policy and program recommendations** designed to remove barriers to integration and increase efficiency.
- Near-term **integrated project opportunities** to serve as role models for future collaboration.
- **A Water Balance Tool** designed to help city managers evaluate new water management ideas.

2. BALANCE ENVIRONMENTAL, ECONOMIC, AND SOCIETAL GOALS

- **Project evaluation criteria** that balance environmental, economic, and societal goals.
- **Project benefits identified and prioritized** with City departments and stakeholders.
- Recommendations for **maximum benefit water management projects**.
- **Funding strategies and cost-sharing opportunities** to leverage existing dollars and maximize public investments.

3. IMPROVE HEALTH OF LOCAL WATERSHEDS

- **Ideas and partnership strategies** for neighborhood-scale green infrastructure projects and programs.
- A **stormwater and urban runoff facilities plan** that incorporates water supply, water quality, and flood protection, and identifies more sustainable and resilient green infrastructure.
- An **LA River Flow Study** that will inform future studies to help balance water supply and LA River needs.
- Identification of **dry weather flow diversion opportunities** to improve waterway quality and increase recycled water availability.

4. IMPROVE LOCAL WATER SUPPLY RELIABILITY

- Strategies and projects to **maximize stormwater capture** that consider water quality, flood risk mitigation, and water supply benefits.
- **Recommendations for potable reuse** and other opportunities to increase water recycling.
- **Operations and maintenance alternatives** developed among City Departments and Regional Agencies to support stormwater strategies and climate resiliency.

5. IMPLEMENT, MONITOR, AND MAINTAIN A RELIABLE WASTEWATER SYSTEM

- Project options to **maximize and optimize potable reuse**.
- A **wastewater facilities plan** to prepare for the range of future water reuse scenarios for the City's four water reclamation plants.
- Analysis of **opportunities for new satellite water reclamation plants** to create a distributed system of recycled water production.

6. INCREASE CLIMATE RESILIENCE

- **Flood and tsunami impact zones identification**.
- Developed **risk mitigation solutions** for wastewater and stormwater facilities.
- **Approaches to update City design manuals and specifications** to be climate resilient for capital projects.

7. INCREASE COMMUNITY AWARENESS AND ADVOCACY FOR SUSTAINABLE WATER

- A **stakeholder-shaped plan**, and increased stakeholder awareness of the City's water challenges based on participation in numerous workshops and meetings focused on making Los Angeles a more water-resilient city.
- **Key Plan components** informed by in-depth Special Topic Group discussions.
- **School and university partnerships** to expand education on water conservation, water reuse, and stormwater capture and equip students to develop new ideas to meet the City's water challenges.
- **Increased awareness and stakeholder advocacy** for sustainable water projects and programs as result of One Water LA participation in numerous community fairs, business, industry, and environmental events.

A SMART URBAN WATER CYCLE

The One Water LA 2040 Plan identifies projects, programs, and policies to enhance the City's urban water cycle. An enhanced urban water cycle increases water recycling and stormwater capture opportunities and minimizes losses to the ocean while reducing reliance on purchased imported water.

SUSTAINABLE CITY PLAN GOALS SUPPORTED BY ONE WATER LA

